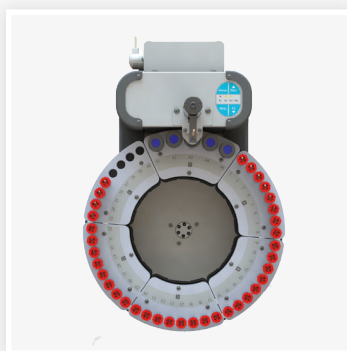
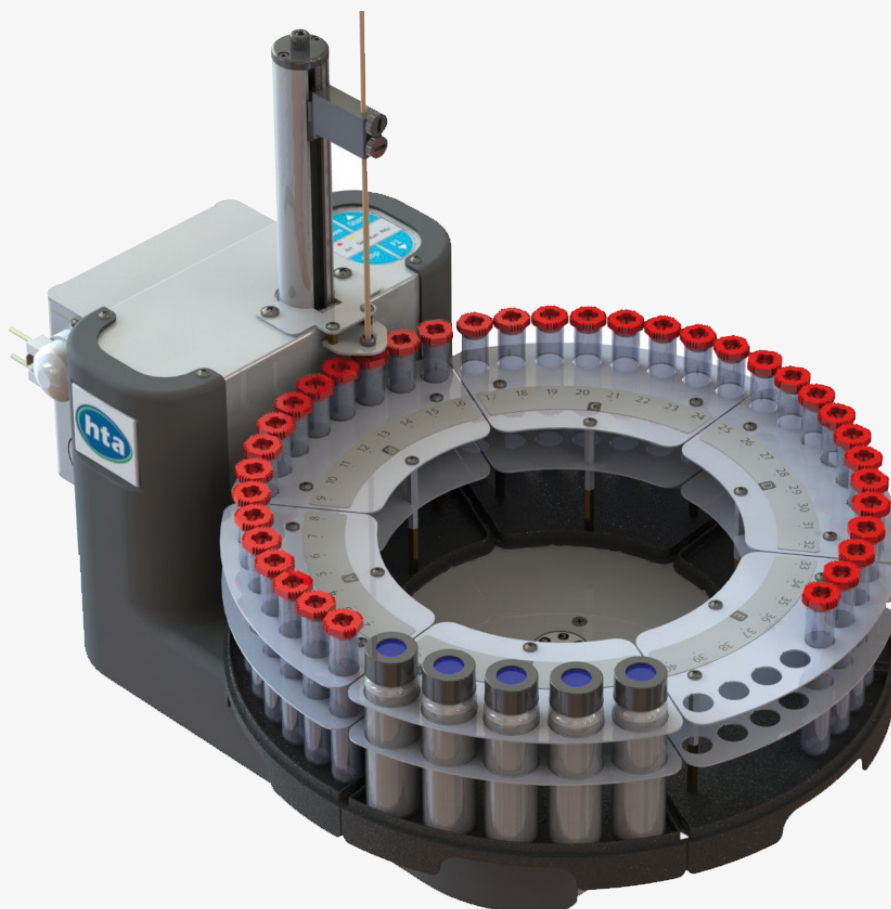




# HT1500U

EFFECTIVE AUTOSAMPLER FOR ION CHROMATOGRAPHY  
AND FLOW-THROUGH-CELL APPLICATIONS



**Load your samples and press START button.** The tray rotates and the arm with needle is aligned on top of the first sample tube to be processed.

The needle is inserted at the **programmable depth** where the sample is aspirated through the built-in pump and **delivered to the analyzer**. Then, by using the on-board solvents, the needle and the whole flow-path are cleaned before processing the next sample.

**HT1500U**, which uses standard consumables, **supports multiple racks – each of them removable** - allowing for continuous feeding and convenient operations.

**HT1500U** offers the capability to automate up to 40 samples, and also includes 5 positions for rinsing solvents.

Different configurations are available for HT1500U: **a stainless steel needle** is available as well as a **polymeric needle** to deal with metal-sensitive applications. Furthermore both **open and sealed tubes** are supported to fit your workflow.

## KEY FEATURES:

- Easy-To-Operate
- Support metal free applications
- Removable racks for continuous feeding

## EASY-TO-OPERATE

**HT1500U** comes with HTA Autosampler Manager (Standard Version), our complimentary software control for autosampler programming. After setting your method once, you **just need to load samples and press START** on the autosampler keypad: experience seamless integration.

## NO COMPROMISE ON QUALITY

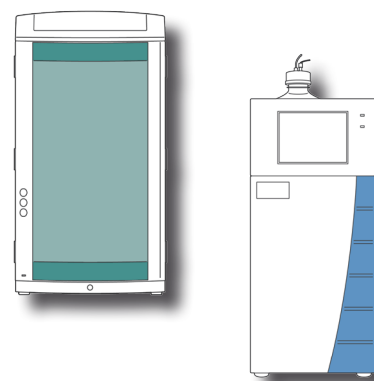
While we have struggled to achieve a **low price**, we haven't made any compromises on quality.

**HT1500U** has a **strong commitment to quality** that focuses on providing a real unattended experience: **HT1500U** will be your workhorse requiring very little or no attention from lab technicians. The **materials** have been picked up to provide longevity; the **up-to-date technologies** offer reliability that deserves a modern instrument while the design attests to our **care in details**.

## Ion Chromatography (IC)

**HT1500U** is an autosampler designed to automate **IC applications**, combining with any analyzer: anions and cations analysis with just one autosampler.

**HT1500U** is the best choice for anyone looking for immediate automation.



## Flow-through-cell applications

The autosampler is compatible with both push-to-fill and pull-to-fill sample introduction modes.

In **push-to-fill mode**, the peristaltic pump will be connected to the inlet port of the analyzer; it will be located between the needle and the flow-through cell.

In **pull-to-fill mode**, the peristaltic pump will be connected to the outlet port of the analyzer; it will be located between the flow-through-cell and the waste.

Contact your HTA Sales Representative to check how **HT1500U** can support your flow-through-cell application.

## TECHNICAL SPECIFICATIONS

### General features

Rack:	5, removable
Sample capacity:	
• HT1502U	45 vials, 4ml
• HT1501U; HT1503U	40 tubes, 10ml
• HT1504U	25 vials, 40ml
Maintenance:	preventive counters available
Electrical control:	USB and TTL

### Wash

Mode:	every injection/sample/step pre & post injection
Washing reagents:	
• HT1501U; HT1502U	5 vials, 40ml
• HT1503U; HT1504U	3 compartments, total capacity: 670ml

### Filling

Sampling depth:	programmable
Sample cycles:	up to 9
Sampling time:	programmable
Filling speed:	programmable
Viscosity delay:	0-25s

### Injection

Mode:	push-to-fill/ pull-to-fill
-------	----------------------------

### Physical features

Dimensions (WxHxD) <sup>1</sup> :	355x380x520mm
Weight:	7.5kg
Power supply:	100-240±10%Vac; 50-60Hz; 60W

Free software "HTA Autosampler Manager (Standard Version)" is provided for PC control; upgrade to "HTA Autosampler Manager (CFR 21 Part 11 Version)" should be purchased separately. PC is required for setup, service, method and sequence editing.

<sup>1</sup> Without accounting the transfer line

**HTA s.r.l.**

via del mella, 77-79 - 25131 Brescia - ITALY  
T: +39 030 3582920 - F: +39 030 3582930  
[www.hta-it.com](http://www.hta-it.com) | [enquiry@hta-it.com](mailto:enquiry@hta-it.com)



Distributed by: